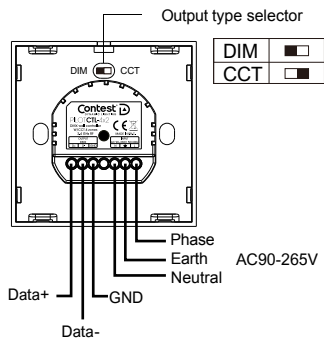
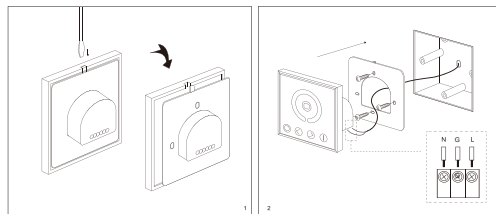


1 - Output selection and connections

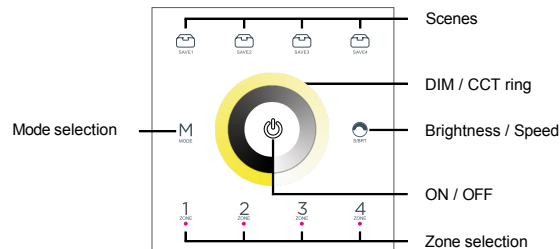


Tip: When the panel is to emit DMX512 signals, the output type must be defined according to the products to be controlled.

2 - Installation



3 - Keys and their functions



Button	Action
ON/OFF	Switches the selected zone(s) on and off.
SAVE 1 - 4	<p>Press once briefly to recall the previously stored lighting status. Factory status :</p> <ul style="list-style-type: none"> - Single color: SAVE 1 = 25%, SAVE 2 = 50%, SAVE 3 = 75%, SAVE 4 = 100%. - CCT: SAVE 1 = 3000°K, SAVE 2 = 4000°K, SAVE 3 = 5000°K, SAVE 4 = 6000°K <p>Storing a scene (SAVE 1 button, for example) :</p> <ol style="list-style-type: none"> 1) Quickly press the SAVE button you wish to save 3 times (within 3seconds, seconds). 2) Set the scene using the zone and light control buttons. It is possible to set each zone independently. 3) After setting, press the same SAVE button again to save. <p>To cancel scene storage, press any other "SAVE" button.</p> <p>Note: The scene configuration process should be completed in less than a minute, and will be automatically terminated without registration if this period expires.</p>
DIM/CCT ring	Brightness adjustment for monochrome ribbons or color temperature adjustment for CCT ribbons.
S/BRT	Brightness adjustment or speed adjustment for dynamic modes.
M	<ul style="list-style-type: none"> - When the receiver is in monochrome mode : 2 dynamic modes : : Stroboscope or dynamic - When the receiver is in CCT mode : 4 modes: step from cool white to warm white, step from warm white to cool white, dimmer from cool white to warm white, cool white to warm white, dimming from warm white to cool white.
Zones 1 - 4	<ul style="list-style-type: none"> - Zone selection buttons. Each corresponding LED lights up when the zone is selected. - You can freely select one, 2, 3 or 4 zones for simultaneous control. - Press one of the zones for 2 seconds to select all zones and go to the state of total control.

Brightness cannot be adjusted when dynamic mode is in use. Dynamic mode retains the brightness of static mode.

4 - Communication modes

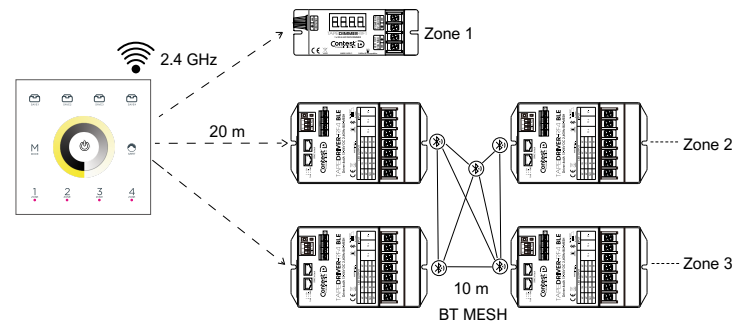
Communication type	Technology	Environment
Wireless	RF 2.4GHz	Installations where the project environment does not lend itself to cabling. The distance between devices is in the effective range of wireless signals.
Wired	DMX512 signal	Allows greater distances between devices.

5 - DMX addressing

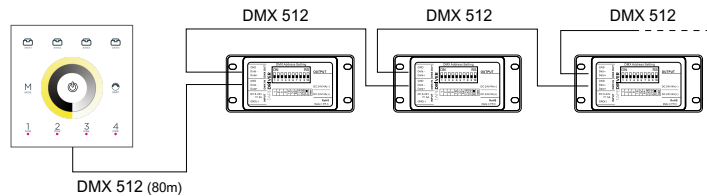
Zone	Monochrome mode	CCT mode	
	DMX address	DMX address (CW)	DMX address (VW)
Zone 1	1	1	2
Zone 2	2	3	4
Zone 3	3	5	6
Zone 4	4	7	8

6 - Control modes

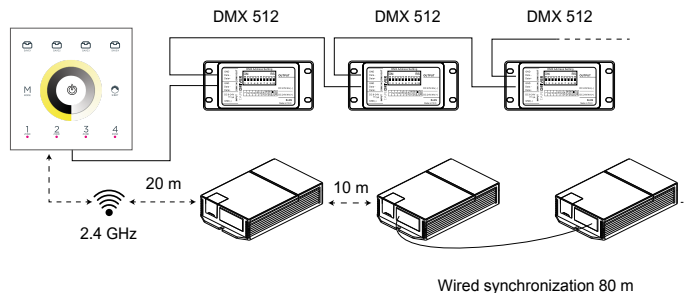
6-1 - Wireless mode



6-2 - Wired mode



6-1 - Wireless mode (wired + wireless)



7 - Wall controller settings

To facilitate initial testing and project debugging, the receiver is normally mismatched. and each panel has a unique code value.

The user must match the panel and receiver when installing the project in order to avoid radio frequency interference.

After installation, all equipment in the complete system must have a single, unified code value, to ensure system stability.

Before learning the new code, it is necessary to erase the receiver's original code; the remote control can only store one code, but it can be reset and can also restore factory settings.

To facilitate subsequent maintenance, the three components that may be involved in the system (receivers, hand-held remote controls and control panels) can be synchronized to a single code.

As the receiver recovers the code value on power-up, it is possible to proceed in batches (power up all receivers in the same zone, and RF code pairing will be performed on all receivers at the same time).

To avoid any confusion in the zone, it is recommended that each zone has its own independent power supply.

7-1 - Pairing: Transmitting the code to the receiver

Step	Action	Instruction
1	Power up the receiver	1 - If the receiver has been previously coded, it is first necessary to delete the code.
2	Select the	Use the Zone button, and the corresponding indicator lights up.
3	Press and hold the " SAVE 1 " button on the control panel for 5 seconds. The LED indicating the selected zone flashes rapidly, indicating that it is entering the pairing code transmission phase.	The control panel automatically exits transmission mode after 60 seconds or after pressing any key.
4	The ribbon connected to the receiver flashes 3 times and returns to its initial state.	The pairing procedure is now complete.

7-2 - Disassociation: Deletion of receiver code

Step	Action	Instruction
1	Power up the receiver	1 - The deletion operation must be completed within one minute of switching on the receiver. If this time is exceeded, the receiver can be switched back on to restart the operation. 2 - Several code deletions can be performed within the remote control's range of action.
2	Press and hold the " SAVE 2 " button on the control panel for 5 seconds. The panel's indicator LED flashes rapidly, meaning that it switches to code transmission mode. deletion. It is not necessary to select the corresponding zone when deleting the code.	1 - The control panel automatically exits transmission mode after 60 seconds or after pressing any key. 2 - If the original control panel is lost, a new control panel can be used for erasing operations.
3	The ribbon connected to the receiver flashes 3 times and returns to its initial state.	The code deletion procedure is complete.

7-3 - Code propagation to multiple control panels

As each control panel has its own code at the time of delivery, when there are several control panels in a system, one of them (e.g. panel A) must be selected as the system's central code value, and the code of the other control panels (e.g. panel B) must be copied to the same code value.

Step	Action	Instruction
1	On panel A, press and hold the " SAVE 1 " button for 5 seconds; the panel's zone LED flashes rapidly, indicating that it is entering the pairing code transmission phase.	The panel automatically exits transmission mode after 60 seconds or after pressing any key.
2	On panel B, press and hold the " ON/OFF " button for 5 seconds; the panel's zone LED(s) will go out, indicating that the code reception state has been reached.	The panel automatically exits receive mode after 30 seconds or when the code has been received.
3	One of the zone LEDs on panel B flashes 3 times.	Code copying is complete.

7-4 - Copying a code from a receiver

A new panel can also copy the code of any receiver in the entire system. After a successful operation, the new panel can replace the original one.

Step	Action	Instruction
1	Switch off the receiver.	The one controlled by the panel.
2	On the panel, p r e s s and hold the " ON/OFF " button for 5 seconds. The zone LED(s) on the panel will go out, indicating that you are entering the code reception state.	The panel automatically exits receive mode after 30 seconds or when the code has been received.
3	Switch on the receiver, the LED for the zone in question flashes 3 times	Code copying is complete.

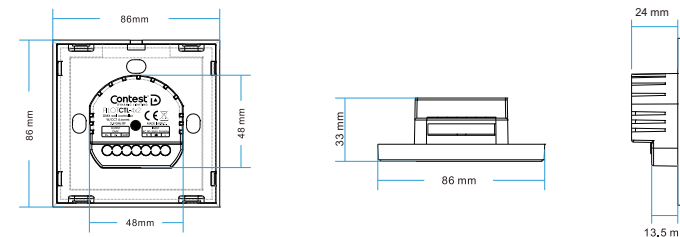
- For system safety, the distance between the panel and the receiver must be less than 2 meters.

7-5 - Restore original factory code

Step	Action	Instruction
1	Press and hold the " ON/OFF " button for 20 seconds	The zone LED on the panel goes out at 5 th seconds, then comes back on after 20 seconds. This means that this step is complete.
2	Press the " SAVE 2 " button, the LED in one of the panel zones flashes 3 times.	Restoration of factory settings is successful.

8 - Key features

Electrical data	
Input voltage	AC 90-265V
RF frequency	2.4 GHz
RF distance	< 20 m
Wired control	DMX 512
Consumption	< 0.58 W / < 1.1 W
Field of application	Monochrome / CCT
Special features	
Output dimming	1024 levels
Speeds	1024 levels
RF connection distance	Up to 20m
Protection	Against short circuits
Operating environment	
Ambient temperature	From 0°C to +45°C
IP index	20
Physical characteristics	
Weight	120 g
Color	White / Black



The CONTEST® brand takes great care in the manufacture of its products to guarantee the highest quality. Changes may therefore be made without prior notice. For this reason, the technical characteristics and physical configuration of products may differ from the specifications and illustrations presented in this manual. For the latest product information and updates, visit <https://dyna.lighting/> CONTEST® is a trademark of HITMUSIC S.A.S - 595 rue de la Pièce Grande - 46230 FONTANES - FRANCE www.hitmusic.eu